

## CHESS LEONARD BARDEN

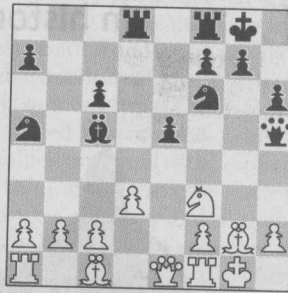
Oxford v Cambridge, first played in 1873, is the oldest annual chess fixture, halted only by war and hosted for over 40 years at the elegant RAC club in Pall Mall by the banker Henry Mutkin.

The event used to be an English chess powerhouse, providing Oxford historians and Cambridge scientists for the national team. In the 1980s when England was number two after the USSR, half the team were from Oxbridge.

In the past decade the mix has changed, with an influx of overseas experts, so it was good that in the 2016 match last week Cambridge had England's best young players, Dan Fernandez and Yang-Fan Zhou.

Eight of the 16 students in the match are reading maths or computer science.

Cambridge were by far the stronger team on paper, but Oxford were tenacious and could have made it close had they taken all their chances.



Cambridge won 6-2, and are now six ahead overall.

2142

Bobby Fischer famously

claimed that he never made a mistake in analysis, but this is a rare exception.

It is a sideline from his 1963 game with Arthur Bisguier, where Fischer wrote that Black cannot aim for the diagram because White's last turn Qd1-e1 threatens both the a5 knight and the e5 pawn.

Later an amateur pointed out that 1...Rfe8! refuted Fischer's claim. What was his idea?

*Solution, back page*

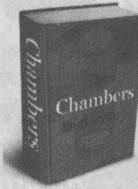
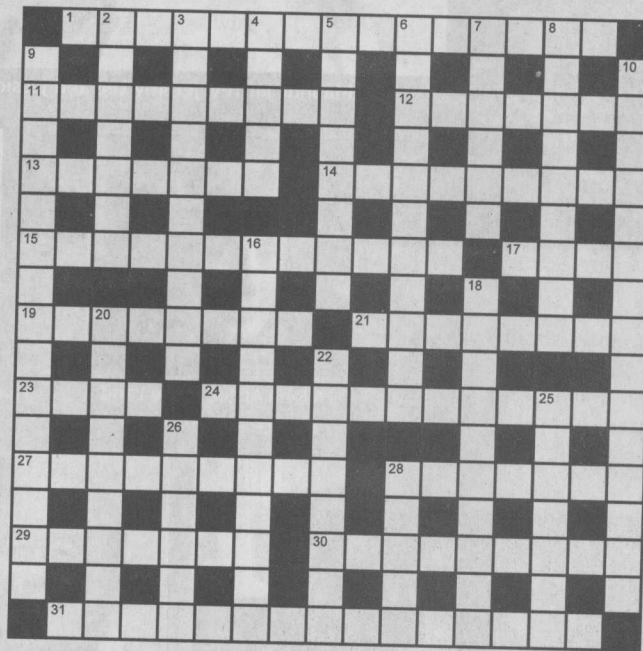
## POLYMATH 856 SET BY BRADMAN

### ACROSS

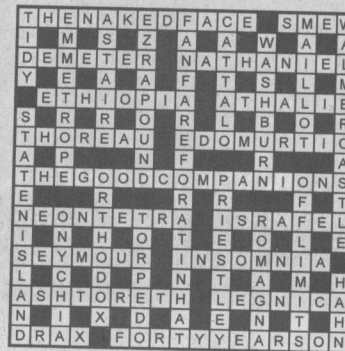
- 1 Basic propositions that cannot be proved (5,10)
- 11 Small vehicle suitable for short journeys (9)
- 12 A small sweet orange (7)
- 13 A plant yielding an aromatic seed (7)
- 14 Another name for ubiquinone (8,1)
- 15 A group of fungi with open apothecia (12)
- 17 Norse god of mischief (4)
- 19 A type of skirt worn by Polynesians (4-4)
- 21 An active geothermal area in New Zealand (8)
- 23 Sir Richard, epidemiologist linking cancer to smoking (4)
- 24 A rare word meaning "going beyond what is required" (12)
- 27 A spectacular mock sea battle performed by the ancient Romans (9)
- 28 The capital of Myanmar (7)
- 29 The Kennelly-Heaviside layer in the ionosphere (1-6)
- 30 A vehicle with wheels and axle in one piece (6,3)
- 31 The thickening of the inner coat of the arteries (15)

### DOWN

- 2 Entrails (7)
- 3 Unofficial votes (5,5)
- 4 Adorned with feathers (5)
- 5 Someone who is being drafted into an organisation (8)
- 6 The crown's permission to elect a bishop (5,6)
- 7 A public square (6)
- 8 "Off the cuff" (9)
- 9 A 1986 film set in the Australian Outback and in New York City (9,6)
- 10 A 150th anniversary (15)
- 16 Yevgeny, a Russian poet (11)
- 18 A short instrumental passage (10)
- 20 A puff pastry case filled with a savoury mixture (3-2-4)
- 22 Relating to meaning in language (8)
- 25 A small Amazonian rodent (7)
- 26 A Maori woman (6)
- 28 Narrow openings or passages in anatomy (5)



### Solution Polymath 854



The first correct entry drawn on Wednesday March 23 wins a copy of *The Chambers Dictionary*. Entries should be addressed to Polymath No 856, Weekend FT, One Southwark Bridge, London SE1 9HL. The solution and winner's name will be published on March 26.

*The 13th edition (2014) retains the much-loved features of The Chambers Dictionary, including the unique quirky definitions for certain words. There are more than 1,000 new words and meanings, and there is also a new Word Lover's Ramble, showing how English words and definitions have changed over the history of the dictionary.*

Name.....  
 Address.....  
 .....  
 .....